

Wunderlich Lecture Hall

1. Push the button on the Control Panel pad to turn it on.
2. Enter the login code (do not write it down or give it to a student), and click *Done*.
3. Power System On - Click the Power System Controls button

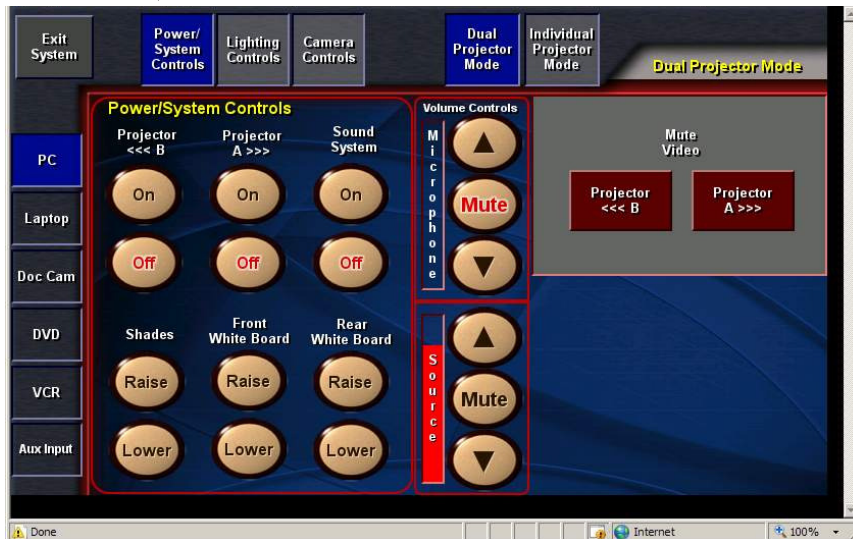


The screen shown on the right will appear in the middle window.

4. Turn on projectors and sound.

Red means chosen

(Red has been marked for black/white printing)



5. Pick the source on the left – PC, Laptop, Doc Cam, DVD, VCR, or Aux Input (additional equipment you bring in)

6. Click Dual Projector to send the source to both projectors.

Note re Source Controls:

When the Source is chosen, the controls for that source, if any, are shown in the middle screen.

Other Controls:

Shades and Whiteboard - Control from the panel or use the button on the wall.

Light Controls - Individually set or use pre-sets; buttons on wall near entry

Exit System

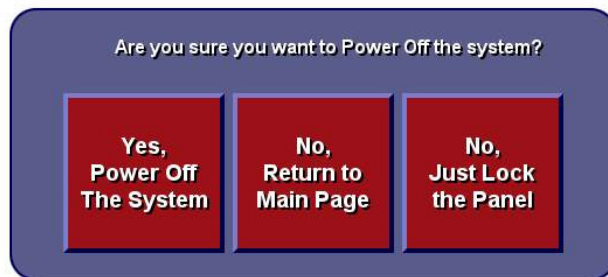


Button in upper left-hand corner

Usually you will then choose *Yes, Power System Off*.

Do not turn off the equipment in the cabinet.

When you click Yes, the projectors are powered off automatically and the control panel is exited.



Additional Notes:

Individual Mode – send a different source to each projector



In this example the Computer (PC) has been sent to projector B and the DVD to projector A and the sound will play from the VCR.

<<< indicates which projector is B and which is A



In the example of Volume Controls on the left, the Microphone is muted, but the Source is playing.